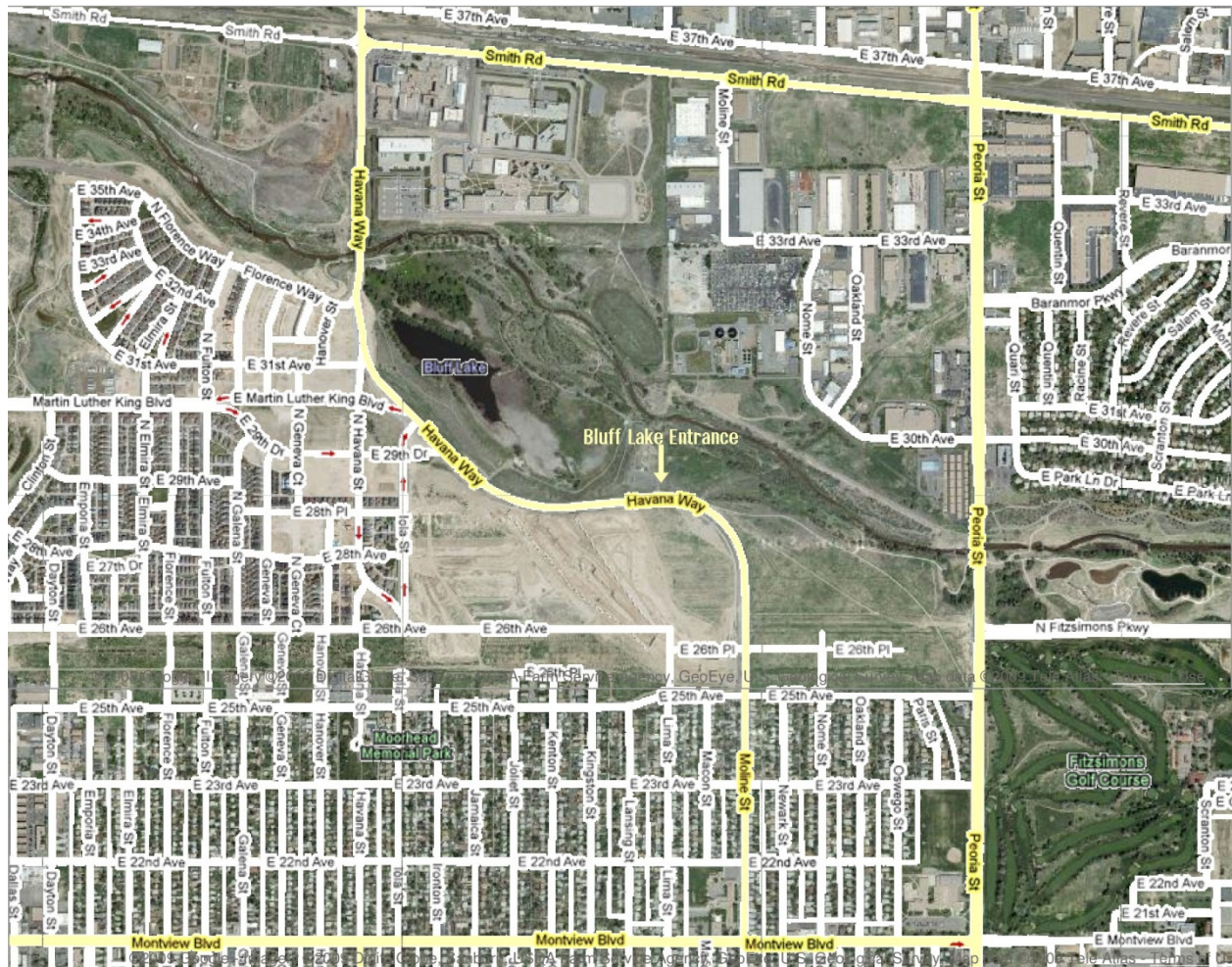


Bluff Lake Nature Center

Satellite Map and Driving Directions

Finding Bluff Lake can be a bit tricky the first time. This is in part due to the changing neighborhoods around the site and the fact that there is no mailing address to rely on for the site. The map and directions below should help you find your way. However, if you are coming from another part of the metro area, please contact Mendy at mevans@blufflake.org for help with directions.



Coming from I-70: Take the Havana exit going south. Turn left (south) at the light off of the exit ramp. Go through the four-way stop at Smith Road. Go through the light at Martin Luther King Boulevard. Turn left (east) at the next light onto 29th Drive. Go through the light at Iola Street and follow the road as it curves to the right. The entrance to Bluff Lake is a half a mile down the curvy road on the left (north) side of the road.

Coming from Martin Luther King Boulevard west of Quebec: Take MLK Blvd east through the Stapleton neighborhood. MLK turns into 29th Drive going one-way (east) after Fulton Street. Go straight through the lights at Havana and Iola Street, and follow the road as it curves to the right. The entrance to Bluff Lake is a half a mile down the curvy road on the left (north) side of the road.

Coming from Colfax Avenue: Go to Colfax Avenue and Moline Street, which is east of Quebec Street and west of Peoria. Turn north on Moline. Go straight on Moline, past 25th Avenue, until you reach the curve in the road. Follow the curve as it turns to the left (west). The Bluff Lake entrance is on the right (north) side of the road.